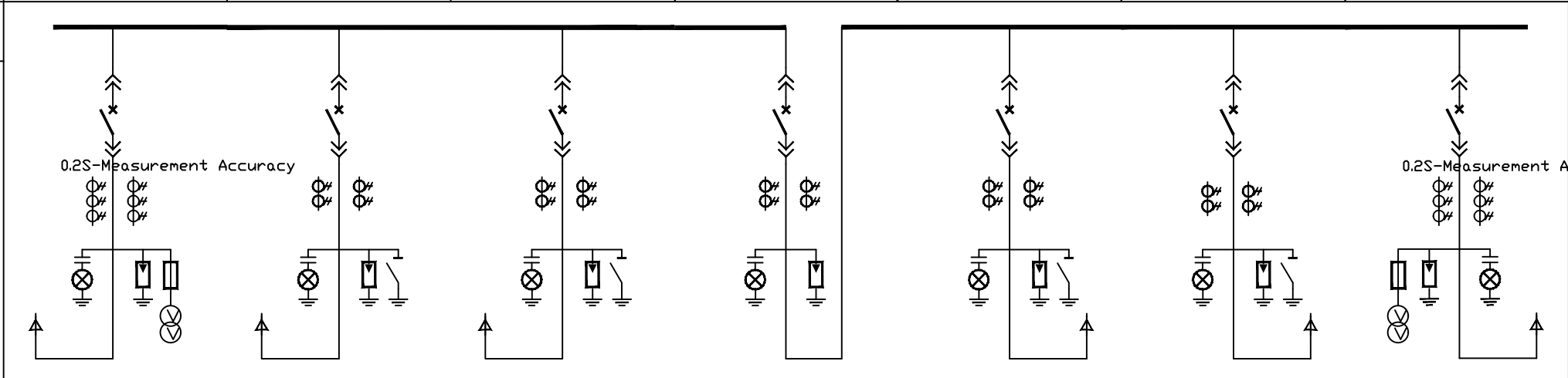


Switchgear No.:	AH1	AH2	AH3	AH4	AH5	AH6	AH7
Switchgear Model.:	KYN28A-12	KYN28A-12	KYN28A-12	KYN28A-12	KYN28A-12	KYN28A-12	KYN28A-12
Switchgear Function.:	1# Incoming Cabinet	Feeder Cabinet	Feeder Cabinet	Bus Section Cabinet	Feeder Cabinet	Feeder Cabinet	2# Incoming
Dimension:(WxDxH)mm	800x1660x2200	800x1660x2200	800x1660x2200	800x1660x2200	800x1660x2200	800x1660x2200	800x1660x2200

BUSBAR:TMY-3X(80X8)

11kV  
Main Circuit



Item	Model No.:	Qty	Model No.:	Qty	Model No.:	Qty	Model No.:	Qty	Model No.:	Qty	Model No.:	Qty		
VCB DC220V	VS1-12/1250A 31.5kA	1	VS1-12/630A 25kA	1	VS1-12/630A 25kA	1	VS1-12/1250A 31.5kA	1	VS1-12/630A 25kA	1	VS1-12/630A 25kA	1	VS1-12/1250A 31.5kA	1
Micro-Protection	ZTS	1	ZTS	1	ZTS	1	ZTS	1	ZTS	1	ZTS	1	ZTS	1
PT	JDZ-11 11/0.1KV 500VA	2											JDZ-11 11/0.1KV 500VA	2
CT 0.5/10P20 10/20VA	LZZBJ9-12 600/5A	2	LZZBJ9-12 150/5A	2	LZZBJ9-12 150/5A	2	LZZBJ9-12 600/5A	2	LZZBJ9-12 150/5A	2	LZZBJ9-12 150/5A	2	LZZBJ9-12 600/5A	2
Lightning Arrester	HY5WS-17/50	3	HY5WS-17/50	3	HY5WS-17/50	3	HY5WS-17/50	3	HY5WS-17/50	3	HY5WS-17/50	3	HY5WS-17/50	3
Fuse														
Display device	GSN-10	1	GSN-10	1	GSN-10	1	GSN-10	1	GSN-10	1	GSN-10	1	GSN-10	1
Energy Meter														
Ammeter	42L6-A 600/5	1	42L6-A 150/5	1	42L6-A 150/5	1	42L6-A 600/5	1	42L6-A 150/5	1	42L6-A 150/5	1	42L6-A 600/5	1
Voltmeter														
Ground Switch			JN15-10	1	JN15-10	1			JN15-10	1	JN15-10	1		
Fault Indicator	EKL3	1	EKL3	1	EKL3	1			EKL3	1	EKL3	1	EKL3	1
Capacity (KW)														
Cable Spec														
Note														

产品型号 Model	KYN28A-12		河南省三禾电气有限公司 三禾电气 HENAN SANHE ELECTRICAL CO., LTD SANHEDIANGDI
所属代号 Own code			
标记 Mark	修改内容 Modifications	日期 Date	11KV SLD
设计 Design	标准 Standard		
校对 Proofreading	审定 Validation		
审核 Audit	日期 Date		
图样标记 Pattern number		重量 Weight	比例 Proportional
共 1 页 Total Page		第 1 页 Article Page	G191016-XT101