

Single-phase six meter box (card type left right structure)



The product model and main configuration

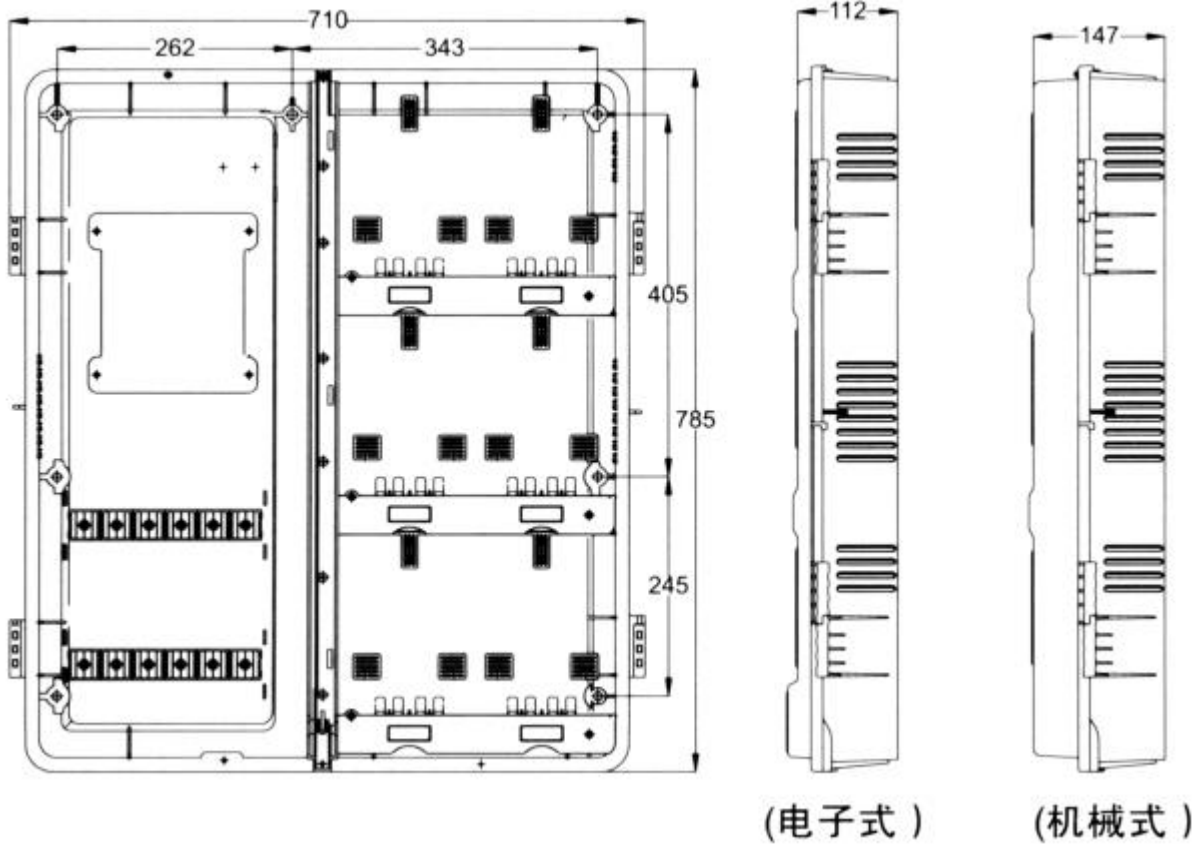
| Model | Configuration | Name | Specifications | No. |
|-----------|----------------------------|------------------|----------------|-----|
| HRBX-601L | main switch configuration | Circuit breaker | NM1-100S/3300 | 1 |
| | Table former configuration | Isolating switch | NH2-100/2P | 6 |
| | Table configuration | Circuit breaker | DZ47-60/2P | 6 |
| HRBX-602L | main switch configuration | Circuit breaker | NM1-100S/3300 | 1 |
| | Table former configuration | Terminals | 1 in 2 out | 3 |
| | Table configuration | Circuit breaker | DZ47-60/2P | 6 |
| HRBX-603L | main switch configuration | Circuit breaker | DZ158-125/2P | 1 |
| | Table former configuration | Isolating switch | NH3-63/2P | 6 |
| | Table configuration | Circuit breaker | DZ47-60/2P | 6 |

Note:

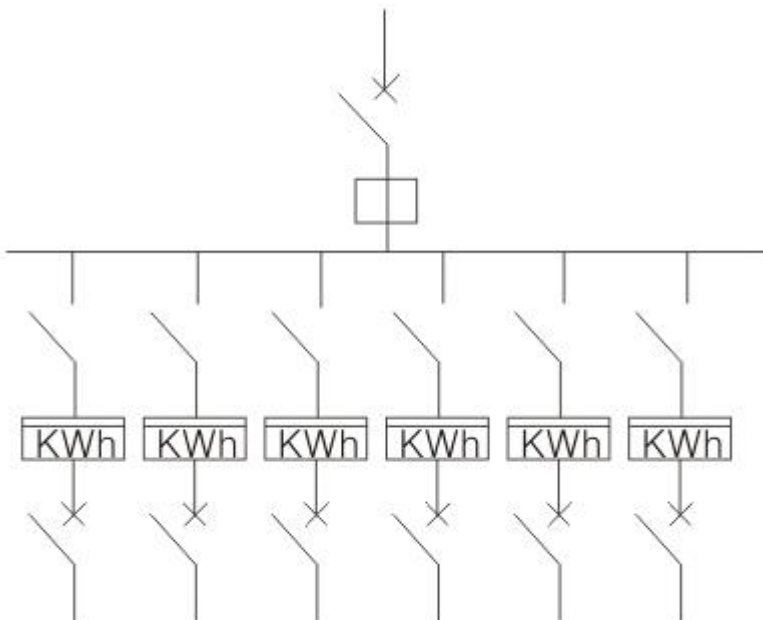
The total switch connections BV16mm² BV25mm²

Watt-hour meter connections BV6mm² BV10mm²

Installation size chart



The wiring diagram



Notes to order

The plan for the company's parameters in the standard configuration, if the customer does not have clear requirements, the company will be standard equipment supply.

Beyond the requirements of the plan shall be separately, please explain.